



# MacBook Pro 17" Unibody Battery Replacement

Replace a worn-out battery on your MacBook Pro 17" Unibody.

Written By: Andrew Bookholt



# INTRODUCTION

Use this guide to replace your MacBook Pro's battery. Removing the battery requires a Tri-point screwdriver.



## TOOLS:

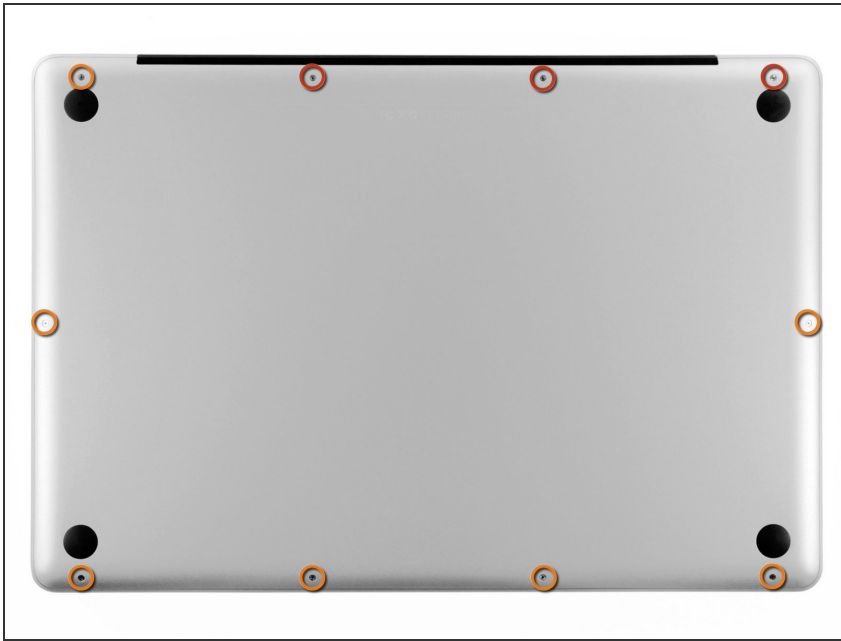
- [Phillips #00 Screwdriver](#) (1)
- [iFixit Opening Tools](#) (1)
- [Tri-point Y0 Screwdriver](#) (1)



## PARTS:

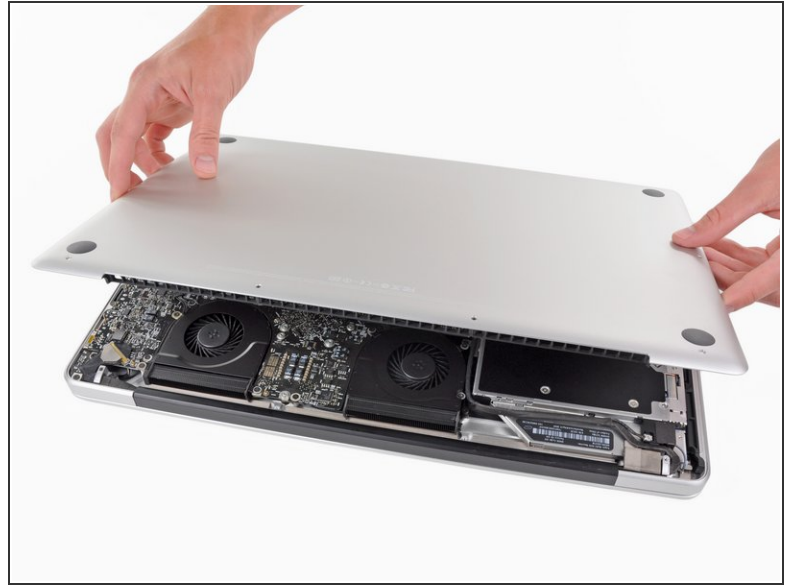
- [MacBook Pro 17" Unibody \(Early and Late 2011\) Replacement Battery](#) (1)
- [MacBook Pro 17" Unibody \(Early 2009 to Mid 2010\) Replacement Battery](#) (1)

## Step 1 — Lower Case



- Remove the following ten screws securing the lower case to the upper case:
  - Three 13.5 mm Phillips screws.
  - Seven 3 mm Phillips screws.

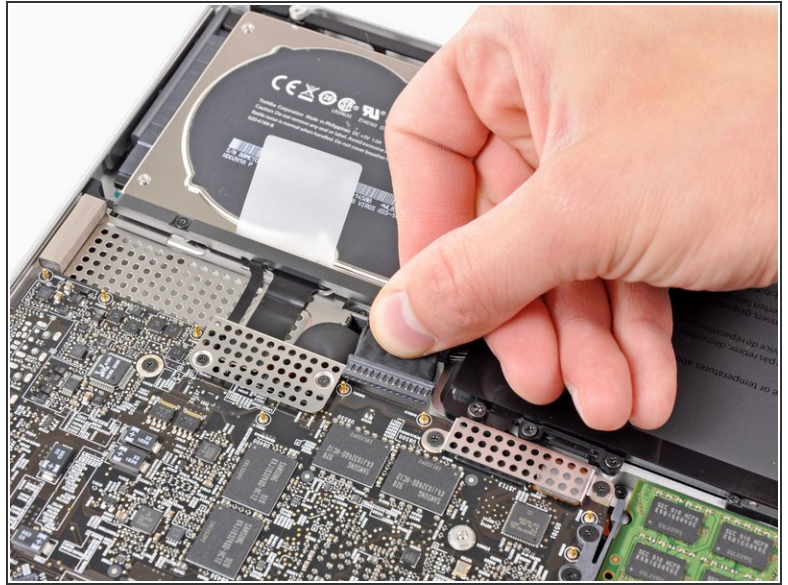
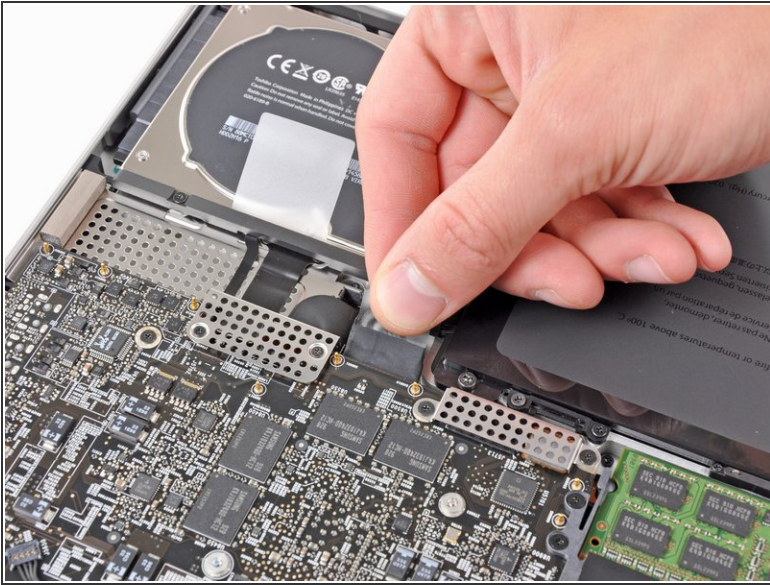
## Step 2



- Wedge your fingers between the lower case and the vent, and lift upward to release the two clips holding the lower case to the upper case.
  - ☑ During reassembly, carefully align the lower case and then press it firmly until both clips engage.
- Remove the lower case.



## Step 3 — Battery



Whenever working near the logic board, it is always wise to first disconnect the battery to avoid short circuits.

- Grab the plastic tab attached to the battery connector and pull it toward the front edge of the device.
- ⓘ Pull the tab parallel to the face of the logic board.

## Step 4



- Remove the three 6.5 mm Tri-point screws securing the battery to the upper case.

## Step 5



- Use a plastic opening tool or another soft thin-edged tool to carefully lift up a corner of the "Warning: Do not remove the battery" sticker off the right speaker/subwoofer enclosure.
- Peel the sticker off the right speaker/subwoofer enclosure.
- It is not necessary to completely peel the sticker off the battery.

This document was generated on 2019-09-17 06:06:19 PM (MST).



## Step 6



- Lift the battery by its attached pull tab and remove it from the upper case.
- ☑ If you're installing a new battery, you should [calibrate](#) it after installation:
  - Charge it to 100%, and then keep charging it for at least 2 more hours. Next, unplug and use it normally to drain the battery. When you see the low battery warning, save your work, and keep your laptop on until it goes to sleep due to low battery. Wait at least 5 hours, then charge your laptop uninterrupted to 100%.
  - If you notice any unusual behavior or problems after installing your new battery, you may need to [reset your MacBook's SMC](#).

To reassemble your device, follow these instructions in reverse order.